

Chairman's Charity Concert

Thursday 28 March 2019
7pm

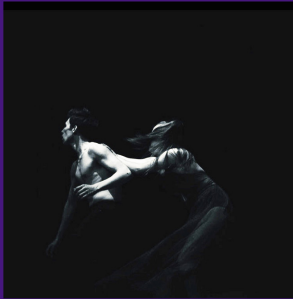
Join Epping Forest District Council's Chairman for a special charity concert featuring a number of local acts including musicians, youth and community choirs, dancers and much more.

All funds raised will go to youth projects in the Epping Forest district and especially to provide respite for young carers.

Tickets

£10

All money raised
will go to
**Youth Projects
in the district**



New City College
Borders Lane, Loughton, IG10 3SA

To book tickets visit:

<https://eppingforestdc.bookinglive.com/>

Or call 01992 564226 (Monday - Friday 10am - 4pm)

NEW CITY COLLEGE | Epping Forest

J&R Haulage Ltd

SHEEN PUBLISHING

ABBAY TOTAL CARE GROUP